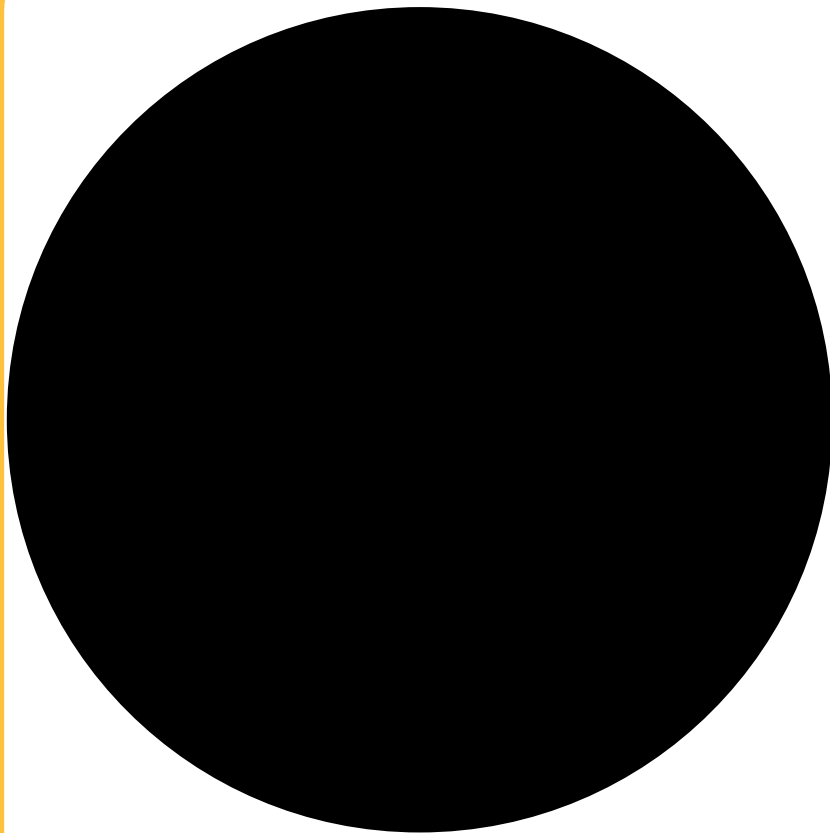




O-Ring



INFORMACION TECNICA

Un O-Ring es el elemento más accesible y eficaz para prevenir la fuga de fluidos bajo distintas condiciones de servicio.

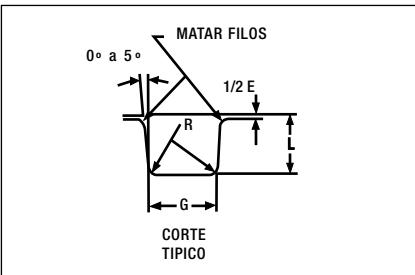
Sus principales ventajas son:

- Puede ser utilizado como sello estático, cuando las piezas no tienen movimiento y también en uso dinámico de vaivén, oscilante o rotativo.
- Permite el sellado en todas las direcciones, radial, axial u oblicua.
- El fluido puede ser líquido o gaseoso.
- Disponible en medidas y tolerancias normalizadas internacionalmente.
- Se dispone de una amplia variedad de dimensiones y compuestos.
- Son de bajo precio relativo.
- En muchos casos permiten su desarme y reutilización.
- Cierran en un amplio rango de presiones, temperaturas y tolerancias.
- Una vez instalados no requieren de ajustes durante su tiempo de vida útil.
- Son de peso reducido y requieren muy poco espacio, permitiendo un diseño muy compacto

DISEÑO DEL ALOJAMIENTO

La acción de sellado del O-Ring se materializa mediante la deformación de su sección "W", obtenida a través de un correcto diseño de su alojamiento.

Las dimensiones de ranura "L" y "G" pueden obtenerse de la tabla de diseño.



Para uso estático, el aplastamiento varía del 12% al 25%.

En uso dinámico la deformación debe ser del 8% al 20%

En alojamientos existentes, la cota "L" debe garantizar una deformación de la sección "W", no inferior a 0.25 mm en valor absoluto.

La terminación superficial del alojamiento debe ser de 32 *M*inches para superficies estáticas y de 16 *M*inches para superficies dinámicas

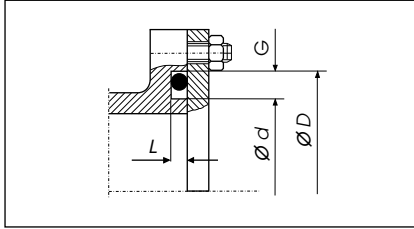
TABLA DE DISEÑO				
Secc. "W"	Dimensiones de Alojamiento			
	Profundidad "L"		Ancho "G" ± 0.1	Radio "R"
	Estático	Dinámico		
1.78	1.25 1.35	1.40 1.45	2.5	0.1 0.4
2.62	2.05 2.15	2.25 2.30	3.7	0.1 0.4
3.53	2.80 2.95	3.05 3.10	4.9	0.2 0.6
5.33	4.30 4.50	4.65 4.75	7.3	0.5 1.0
6.99	5.75 5.95	6.00 6.10	9.7	0.5 1.0

Para la correcta selección del O-Ring conviene observar las siguientes recomendaciones:

Sello de brida- Deformación axial ó frontal

En caso de presión interna, el diámetro exterior del O-Ring "D.E", deberá respaldarse sobre el diámetro de ranura "D".

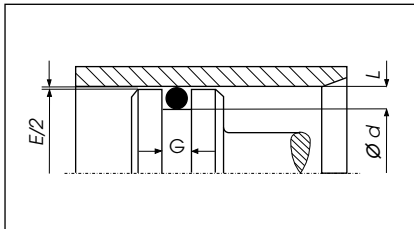
Si la presión es externa, el diámetro interior del O-Ring deberá estar en contacto con el diámetro de ranura "d".



Sello de pistón- Deformación radial

El diámetro interior del O-Ring "D.I", deberá ser igual o menor a "d".

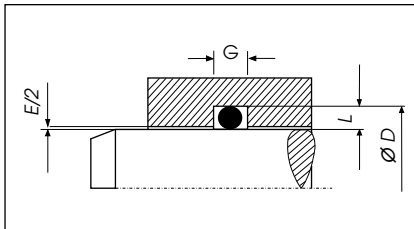
Estiramiento máximo: 7%.



Sello de vástago- Deformación radial

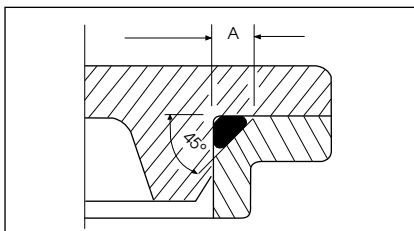
Se deberá elegir un O-Ring cuyo diámetro exterior "D.E", sea igual o mayor que "D".

Discrepancia máxima: 3 %



Sellado en diagonal

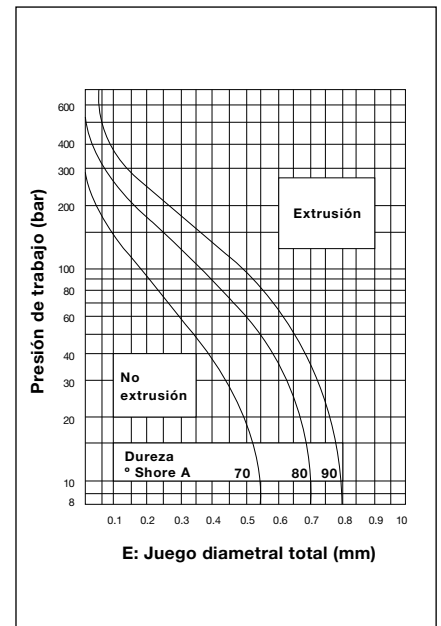
Se materializa con la deformación del O-Ring a través de un alojamiento a 45°. La longitud del chafán "A", debe ser un 30/ 35% superior a la sección "W".



EXTRUSION

Es el daño que experimenta el O-Ring sometido a elevadas presiones y/o huelgos considerables.

Para predecir este fallo puede recurrirse a la utilización del gráfico donde se delimita las zona de trabajo de los distintos compuestos en función de la dureza, presión y holgura "E", del alojamiento.



ALMACENAMIENTO

Para una mejor retención de las propiedades físicas originales de los productos de caucho, conviene observar las siguientes recomendaciones:

El almacén debe ser fresco, seco, sin polvo ni corrientes de aire.

Deberá evitarse la proximidad de tubos fluorescentes y toda fuente de luz emisora de rayos ultravioleta.

Los motores y tableros electricos son considerados perjudiciales por ser potenciales generadores de ozono.

La temperatura ideal debería estar comprendida entre -10°C y +20°C con una humedad óptima del 65%.

Las fuentes de calor deben ser indirectas y estar situadas a no menos de un metro. Los combustibles, lubricantes, ácidos, disolventes y productos químicos en general deben ser almacenados en otro sitio.

La provisión de los O-Rings en cajas, dentro de bolsas de polietileno termoselladas, garantizan una buena protección contra la luz, polvo y otros agentes externos.

El hecho de mantener las piezas dentro de su envase original, no solo preserva al material, sino que asegura su rastreabilidad y una adecuada rotación del stock.

NORMAS DE MONTAJE

Verificar que las dimensiones del O-Ring y el compuesto sean las correctas.

Eliminar toda arista viva.

Facilitar la deformación e introducción del O-Ring mediante un chafán de 15/20° Asegurar una correcta limpieza del alojamiento y de los útiles de montaje.

Proveer una adecuada lubricación inicial.

El O-Ring puede ser estirado hasta un 50% de su diámetro interior para facilitar su colocación. En el caso de los O-Rings de menor diámetro pueden requerirse estiramiento aún mayores.

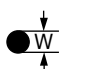
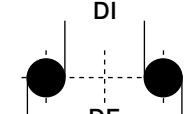
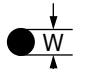
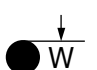


Se deberá evitar el clásico retorcimiento del O-Ring que generalmente se produce al finalizar su montaje dentro de la ranura.

Nunca deberá forzarse su colocación sin haber observado todas las recomendaciones anteriores.

O-Ring

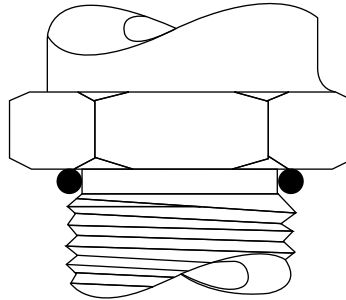
Construya con el mejor !

Serie Standard 2-XXX

 1.78 ± 0.08						<table border="1"> <thead> <tr> <th>Parker N°</th><th>DI mm</th><th>DE mm</th><th>Parker N°</th><th>DI mm</th><th>DE mm</th><th>Parker N°</th><th>DI mm</th><th>DE mm</th><th>Parker N°</th><th>DI mm</th><th>DE mm</th><th>Parker N°</th><th>DI mm</th><th>DE mm</th><th>Parker N°</th><th>DI mm</th><th>DE mm</th></tr> </thead> <tbody> <tr><td>2-001*</td><td>0.74</td><td>2.78</td><td>2-011</td><td>7.65</td><td>11.21</td><td>2-021</td><td>23.52</td><td>27.08</td><td>2-031</td><td>44.17</td><td>47.73</td><td>2-041</td><td>75.92</td><td>79.48</td></tr> <tr><td>2-002*</td><td>1.07</td><td>3.61</td><td>2-012</td><td>9.25</td><td>12.81</td><td>2-022</td><td>25.12</td><td>28.68</td><td>2-032</td><td>47.35</td><td>50.91</td><td>2-042</td><td>82.27</td><td>85.83</td></tr> <tr><td>2-003*</td><td>1.42</td><td>4.46</td><td>2-013</td><td>10.82</td><td>14.38</td><td>2-023</td><td>26.70</td><td>30.26</td><td>2-033</td><td>50.52</td><td>54.08</td><td>2-043</td><td>88.62</td><td>92.18</td></tr> <tr><td>2-004</td><td>1.78</td><td>5.34</td><td>2-014</td><td>12.42</td><td>15.98</td><td>2-024</td><td>28.30</td><td>31.86</td><td>2-034</td><td>53.70</td><td>57.26</td><td>2-044</td><td>94.97</td><td>98.53</td></tr> <tr><td>2-005</td><td>2.57</td><td>6.13</td><td>2-015</td><td>14.00</td><td>17.56</td><td>2-025</td><td>29.87</td><td>33.43</td><td>2-035</td><td>56.87</td><td>60.43</td><td>2-045</td><td>101.32</td><td>104.88</td></tr> <tr><td>2-006</td><td>2.90</td><td>6.46</td><td>2-016</td><td>15.60</td><td>19.16</td><td>2-026</td><td>31.47</td><td>35.03</td><td>2-036</td><td>60.05</td><td>63.61</td><td>2-046</td><td>107.67</td><td>111.23</td></tr> <tr><td>2-007</td><td>3.68</td><td>7.24</td><td>2-017</td><td>17.17</td><td>20.73</td><td>2-027</td><td>33.05</td><td>36.61</td><td>2-037</td><td>63.22</td><td>66.78</td><td>2-047</td><td>114.02</td><td>117.58</td></tr> <tr><td>2-008</td><td>4.47</td><td>8.03</td><td>2-018</td><td>18.77</td><td>22.33</td><td>2-028</td><td>34.65</td><td>38.21</td><td>2-038</td><td>66.40</td><td>69.96</td><td>2-048</td><td>120.37</td><td>123.93</td></tr> <tr><td>2-009</td><td>5.28</td><td>8.84</td><td>2-019</td><td>20.35</td><td>23.91</td><td>2-028</td><td>37.82</td><td>42.38</td><td>2-039</td><td>69.57</td><td>73.13</td><td>2-049</td><td>126.72</td><td>130.28</td></tr> <tr><td>2-010</td><td>6.07</td><td>9.63</td><td>2-020</td><td>21.95</td><td>25.51</td><td>2-030</td><td>41.00</td><td>44.56</td><td>2-040</td><td>72.75</td><td>76.31</td><td>2-050</td><td>133.07</td><td>136.63</td></tr> </tbody> </table>																Parker N°	DI mm	DE mm	Parker N°	DI mm	DE mm	Parker N°	DI mm	DE mm	Parker N°	DI mm	DE mm	Parker N°	DI mm	DE mm	Parker N°	DI mm	DE mm	2-001*	0.74	2.78	2-011	7.65	11.21	2-021	23.52	27.08	2-031	44.17	47.73	2-041	75.92	79.48	2-002*	1.07	3.61	2-012	9.25	12.81	2-022	25.12	28.68	2-032	47.35	50.91	2-042	82.27	85.83	2-003*	1.42	4.46	2-013	10.82	14.38	2-023	26.70	30.26	2-033	50.52	54.08	2-043	88.62	92.18	2-004	1.78	5.34	2-014	12.42	15.98	2-024	28.30	31.86	2-034	53.70	57.26	2-044	94.97	98.53	2-005	2.57	6.13	2-015	14.00	17.56	2-025	29.87	33.43	2-035	56.87	60.43	2-045	101.32	104.88	2-006	2.90	6.46	2-016	15.60	19.16	2-026	31.47	35.03	2-036	60.05	63.61	2-046	107.67	111.23	2-007	3.68	7.24	2-017	17.17	20.73	2-027	33.05	36.61	2-037	63.22	66.78	2-047	114.02	117.58	2-008	4.47	8.03	2-018	18.77	22.33	2-028	34.65	38.21	2-038	66.40	69.96	2-048	120.37	123.93	2-009	5.28	8.84	2-019	20.35	23.91	2-028	37.82	42.38	2-039	69.57	73.13	2-049	126.72	130.28	2-010	6.07	9.63	2-020	21.95	25.51	2-030	41.00	44.56	2-040	72.75	76.31	2-050	133.07	136.63																																																																																																																					
Parker N°	DI mm	DE mm	Parker N°	DI mm	DE mm	Parker N°	DI mm	DE mm	Parker N°	DI mm	DE mm	Parker N°	DI mm	DE mm	Parker N°	DI mm	DE mm																																																																																																																																																																																																																																																																																																	
2-001*	0.74	2.78	2-011	7.65	11.21	2-021	23.52	27.08	2-031	44.17	47.73	2-041	75.92	79.48																																																																																																																																																																																																																																																																																																				
2-002*	1.07	3.61	2-012	9.25	12.81	2-022	25.12	28.68	2-032	47.35	50.91	2-042	82.27	85.83																																																																																																																																																																																																																																																																																																				
2-003*	1.42	4.46	2-013	10.82	14.38	2-023	26.70	30.26	2-033	50.52	54.08	2-043	88.62	92.18																																																																																																																																																																																																																																																																																																				
2-004	1.78	5.34	2-014	12.42	15.98	2-024	28.30	31.86	2-034	53.70	57.26	2-044	94.97	98.53																																																																																																																																																																																																																																																																																																				
2-005	2.57	6.13	2-015	14.00	17.56	2-025	29.87	33.43	2-035	56.87	60.43	2-045	101.32	104.88																																																																																																																																																																																																																																																																																																				
2-006	2.90	6.46	2-016	15.60	19.16	2-026	31.47	35.03	2-036	60.05	63.61	2-046	107.67	111.23																																																																																																																																																																																																																																																																																																				
2-007	3.68	7.24	2-017	17.17	20.73	2-027	33.05	36.61	2-037	63.22	66.78	2-047	114.02	117.58																																																																																																																																																																																																																																																																																																				
2-008	4.47	8.03	2-018	18.77	22.33	2-028	34.65	38.21	2-038	66.40	69.96	2-048	120.37	123.93																																																																																																																																																																																																																																																																																																				
2-009	5.28	8.84	2-019	20.35	23.91	2-028	37.82	42.38	2-039	69.57	73.13	2-049	126.72	130.28																																																																																																																																																																																																																																																																																																				
2-010	6.07	9.63	2-020	21.95	25.51	2-030	41.00	44.56	2-040	72.75	76.31	2-050	133.07	136.63																																																																																																																																																																																																																																																																																																				
 2.62 ± 0.08			<table border="1"> <thead> <tr> <th>Parker N°</th><th>DI mm</th><th>DE mm</th><th>Parker N°</th><th>DI mm</th><th>DE mm</th><th>Parker N°</th><th>DI mm</th><th>DE mm</th><th>Parker N°</th><th>DI mm</th><th>DE mm</th><th>Parker N°</th><th>DI mm</th><th>DE mm</th><th>Parker N°</th><th>DI mm</th><th>DE mm</th></tr> </thead> <tbody> <tr><td>2-102</td><td>1.24</td><td>6.48</td><td>2-115</td><td>17.12</td><td>22.36</td><td>2-128</td><td>37.77</td><td>43.01</td><td>2-141</td><td>58.42</td><td>63.66</td><td>2-154</td><td>94.92</td><td>100.16</td><td>2-167</td><td>177.47</td><td>182.71</td></tr> <tr><td>2-103</td><td>2.06</td><td>7.30</td><td>2-116</td><td>18.72</td><td>23.96</td><td>2-129</td><td>39.34</td><td>44.58</td><td>2-142</td><td>59.99</td><td>65.23</td><td>2-155</td><td>101.27</td><td>106.51</td><td>2-168</td><td>183.82</td><td>189.06</td></tr> <tr><td>2-104</td><td>2.84</td><td>8.08</td><td>2-117</td><td>20.30</td><td>25.54</td><td>2-130</td><td>40.94</td><td>46.18</td><td>2-143</td><td>61.60</td><td>66.84</td><td>2-156</td><td>107.62</td><td>112.86</td><td>2-169</td><td>190.17</td><td>195.41</td></tr> <tr><td>2-105</td><td>3.63</td><td>8.87</td><td>2-118</td><td>21.89</td><td>27.13</td><td>2-131</td><td>42.52</td><td>47.76</td><td>2-144</td><td>63.17</td><td>68.41</td><td>2-157</td><td>113.97</td><td>119.21</td><td>2-170</td><td>196.52</td><td>201.76</td></tr> <tr><td>2-106</td><td>4.42</td><td>9.66</td><td>2-119</td><td>23.47</td><td>28.71</td><td>2-132</td><td>44.12</td><td>49.36</td><td>2-145</td><td>64.77</td><td>70.01</td><td>2-158</td><td>120.32</td><td>125.56</td><td>2-171</td><td>202.87</td><td>208.11</td></tr> <tr><td>2-107</td><td>5.23</td><td>10.47</td><td>2-120</td><td>25.07</td><td>30.31</td><td>2-133</td><td>45.69</td><td>50.93</td><td>2-146</td><td>66.34</td><td>71.58</td><td>2-159</td><td>126.67</td><td>131.91</td><td>2-172</td><td>209.22</td><td>214.46</td></tr> <tr><td>2-108</td><td>6.02</td><td>11.26</td><td>2-121</td><td>26.64</td><td>31.88</td><td>2-134</td><td>47.29</td><td>52.53</td><td>2-147</td><td>67.95</td><td>73.19</td><td>2-160</td><td>133.02</td><td>138.26</td><td>2-173</td><td>215.57</td><td>220.81</td></tr> <tr><td>2-109</td><td>7.59</td><td>12.83</td><td>2-122</td><td>28.24</td><td>33.48</td><td>2-135</td><td>48.90</td><td>54.14</td><td>2-148</td><td>69.52</td><td>74.76</td><td>2-161</td><td>139.37</td><td>144.61</td><td>2-174</td><td>221.92</td><td>227.16</td></tr> <tr><td>2-110</td><td>9.19</td><td>14.43</td><td>2-123</td><td>29.82</td><td>35.06</td><td>2-136</td><td>50.47</td><td>55.71</td><td>2-149</td><td>71.12</td><td>76.36</td><td>2-162</td><td>145.72</td><td>150.96</td><td>2-175</td><td>228.27</td><td>233.51</td></tr> <tr><td>2-111</td><td>10.77</td><td>16.01</td><td>2-124</td><td>31.42</td><td>36.66</td><td>2-137</td><td>52.07</td><td>57.31</td><td>2-150</td><td>72.69</td><td>77.93</td><td>2-163</td><td>155.07</td><td>157.31</td><td>2-176</td><td>234.62</td><td>239.86</td></tr> <tr><td>2-112</td><td>12.37</td><td>17.61</td><td>2-125</td><td>32.99</td><td>38.23</td><td>2-138</td><td>53.64</td><td>58.88</td><td>2-151</td><td>75.87</td><td>81.11</td><td>2-164</td><td>158.42</td><td>163.66</td><td>2-177</td><td>240.97</td><td>246.21</td></tr> <tr><td>2-113</td><td>13.94</td><td>19.18</td><td>2-126</td><td>34.59</td><td>39.83</td><td>2-139</td><td>55.25</td><td>60.49</td><td>2-152</td><td>82.22</td><td>87.46</td><td>2-165</td><td>164.77</td><td>170.01</td><td>2-178</td><td>247.32</td><td>252.56</td></tr> <tr><td>2-114</td><td>15.54</td><td>20.78</td><td>2-127</td><td>36.17</td><td>41.41</td><td>2-140</td><td>56.82</td><td>62.06</td><td>2-153</td><td>88.57</td><td>93.81</td><td>2-166</td><td>171.12</td><td>176.36</td><td></td><td></td><td></td></tr> </tbody> </table>																Parker N°	DI mm	DE mm	Parker N°	DI mm	DE mm	Parker N°	DI mm	DE mm	Parker N°	DI mm	DE mm	Parker N°	DI mm	DE mm	Parker N°	DI mm	DE mm	2-102	1.24	6.48	2-115	17.12	22.36	2-128	37.77	43.01	2-141	58.42	63.66	2-154	94.92	100.16	2-167	177.47	182.71	2-103	2.06	7.30	2-116	18.72	23.96	2-129	39.34	44.58	2-142	59.99	65.23	2-155	101.27	106.51	2-168	183.82	189.06	2-104	2.84	8.08	2-117	20.30	25.54	2-130	40.94	46.18	2-143	61.60	66.84	2-156	107.62	112.86	2-169	190.17	195.41	2-105	3.63	8.87	2-118	21.89	27.13	2-131	42.52	47.76	2-144	63.17	68.41	2-157	113.97	119.21	2-170	196.52	201.76	2-106	4.42	9.66	2-119	23.47	28.71	2-132	44.12	49.36	2-145	64.77	70.01	2-158	120.32	125.56	2-171	202.87	208.11	2-107	5.23	10.47	2-120	25.07	30.31	2-133	45.69	50.93	2-146	66.34	71.58	2-159	126.67	131.91	2-172	209.22	214.46	2-108	6.02	11.26	2-121	26.64	31.88	2-134	47.29	52.53	2-147	67.95	73.19	2-160	133.02	138.26	2-173	215.57	220.81	2-109	7.59	12.83	2-122	28.24	33.48	2-135	48.90	54.14	2-148	69.52	74.76	2-161	139.37	144.61	2-174	221.92	227.16	2-110	9.19	14.43	2-123	29.82	35.06	2-136	50.47	55.71	2-149	71.12	76.36	2-162	145.72	150.96	2-175	228.27	233.51	2-111	10.77	16.01	2-124	31.42	36.66	2-137	52.07	57.31	2-150	72.69	77.93	2-163	155.07	157.31	2-176	234.62	239.86	2-112	12.37	17.61	2-125	32.99	38.23	2-138	53.64	58.88	2-151	75.87	81.11	2-164	158.42	163.66	2-177	240.97	246.21	2-113	13.94	19.18	2-126	34.59	39.83	2-139	55.25	60.49	2-152	82.22	87.46	2-165	164.77	170.01	2-178	247.32	252.56	2-114	15.54	20.78	2-127	36.17	41.41	2-140	56.82	62.06	2-153	88.57	93.81	2-166	171.12	176.36																																							
Parker N°	DI mm	DE mm	Parker N°	DI mm	DE mm	Parker N°	DI mm	DE mm	Parker N°	DI mm	DE mm	Parker N°	DI mm	DE mm	Parker N°	DI mm	DE mm																																																																																																																																																																																																																																																																																																	
2-102	1.24	6.48	2-115	17.12	22.36	2-128	37.77	43.01	2-141	58.42	63.66	2-154	94.92	100.16	2-167	177.47	182.71																																																																																																																																																																																																																																																																																																	
2-103	2.06	7.30	2-116	18.72	23.96	2-129	39.34	44.58	2-142	59.99	65.23	2-155	101.27	106.51	2-168	183.82	189.06																																																																																																																																																																																																																																																																																																	
2-104	2.84	8.08	2-117	20.30	25.54	2-130	40.94	46.18	2-143	61.60	66.84	2-156	107.62	112.86	2-169	190.17	195.41																																																																																																																																																																																																																																																																																																	
2-105	3.63	8.87	2-118	21.89	27.13	2-131	42.52	47.76	2-144	63.17	68.41	2-157	113.97	119.21	2-170	196.52	201.76																																																																																																																																																																																																																																																																																																	
2-106	4.42	9.66	2-119	23.47	28.71	2-132	44.12	49.36	2-145	64.77	70.01	2-158	120.32	125.56	2-171	202.87	208.11																																																																																																																																																																																																																																																																																																	
2-107	5.23	10.47	2-120	25.07	30.31	2-133	45.69	50.93	2-146	66.34	71.58	2-159	126.67	131.91	2-172	209.22	214.46																																																																																																																																																																																																																																																																																																	
2-108	6.02	11.26	2-121	26.64	31.88	2-134	47.29	52.53	2-147	67.95	73.19	2-160	133.02	138.26	2-173	215.57	220.81																																																																																																																																																																																																																																																																																																	
2-109	7.59	12.83	2-122	28.24	33.48	2-135	48.90	54.14	2-148	69.52	74.76	2-161	139.37	144.61	2-174	221.92	227.16																																																																																																																																																																																																																																																																																																	
2-110	9.19	14.43	2-123	29.82	35.06	2-136	50.47	55.71	2-149	71.12	76.36	2-162	145.72	150.96	2-175	228.27	233.51																																																																																																																																																																																																																																																																																																	
2-111	10.77	16.01	2-124	31.42	36.66	2-137	52.07	57.31	2-150	72.69	77.93	2-163	155.07	157.31	2-176	234.62	239.86																																																																																																																																																																																																																																																																																																	
2-112	12.37	17.61	2-125	32.99	38.23	2-138	53.64	58.88	2-151	75.87	81.11	2-164	158.42	163.66	2-177	240.97	246.21																																																																																																																																																																																																																																																																																																	
2-113	13.94	19.18	2-126	34.59	39.83	2-139	55.25	60.49	2-152	82.22	87.46	2-165	164.77	170.01	2-178	247.32	252.56																																																																																																																																																																																																																																																																																																	
2-114	15.54	20.78	2-127	36.17	41.41	2-140	56.82	62.06	2-153	88.57	93.81	2-166	171.12	176.36																																																																																																																																																																																																																																																																																																				
 3.53 ± 0.10			<table border="1"> <thead> <tr> <th>Parker N°</th><th>DI mm</th><th>DE mm</th><th>Parker N°</th><th>DI mm</th><th>DE mm</th><th>Parker N°</th><th>DI mm</th><th>DE mm</th><th>Parker N°</th><th>DI mm</th><th>DE mm</th><th>Parker N°</th><th>DI mm</th><th>DE mm</th><th>Parker N°</th><th>DI mm</th><th>DE mm</th></tr> </thead> <tbody> <tr><td>2-201</td><td>4.34</td><td>11.40</td><td>2-215</td><td>26.57</td><td>33.63</td><td>2-229</td><td>59.92</td><td>66.98</td><td>2-243</td><td>104.37</td><td>111.43</td><td>2-257</td><td>148.82</td><td>155.88</td><td>2-271</td><td>234.54</td><td>241.60</td></tr> <tr><td>2-202</td><td>5.94</td><td>13.00</td><td>2-216</td><td>28.17</td><td>35.23</td><td>2-230</td><td>63.09</td><td>70.15</td><td>2-244</td><td>107.54</td><td>114.60</td><td>2-258</td><td>151.99</td><td>159.05</td><td>2-272</td><td>240.89</td><td>247.95</td></tr> <tr><td>2-203</td><td>7.52</td><td>14.58</td><td>2-217</td><td>29.74</td><td>36.80</td><td>2-231</td><td>66.27</td><td>73.33</td><td>2-245</td><td>110.72</td><td>117.78</td><td>2-259</td><td>158.34</td><td>165.40</td><td>2-273</td><td>247.24</td><td>254.30</td></tr> <tr><td>2-204</td><td>9.12</td><td>16.18</td><td>2-218</td><td>31.34</td><td>38.40</td><td>2-232</td><td>69.44</td><td>76.50</td><td>2-246</td><td>113.89</td><td>120.95</td><td>2-260</td><td>164.69</td><td>171.75</td><td>2-274</td><td>253.59</td><td>260.65</td></tr> <tr><td>2-205</td><td>10.69</td><td>17.75</td><td>2-219</td><td>32.92</td><td>39.98</td><td>2-233</td><td>72.62</td><td>79.68</td><td>2-247</td><td>117.07</td><td>124.13</td><td>2-261</td><td>171.04</td><td>178.10</td><td>2-275</td><td>266.29</td><td>273.35</td></tr> <tr><td>2-206</td><td>12.29</td><td>19.35</td><td>2-220</td><td>34.52</td><td>41.58</td><td>2-234</td><td>75.79</td><td>82.85</td><td>2-248</td><td>120.24</td><td>127.30</td><td>2-262</td><td>177.39</td><td>184.45</td><td>2-276</td><td>278.99</td><td>286.05</td></tr> <tr><td>2-207</td><td>13.87</td><td>20.93</td><td>2-221</td><td>36.09</td><td>43.15</td><td>2-235</td><td>78.97</td><td>86.03</td><td>2-249</td><td>123.42</td><td>130.48</td><td>2-263</td><td>183.74</td><td>190.80</td><td>2-277</td><td>291.69</td><td>298.75</td></tr> <tr><td>2-208</td><td>15.47</td><td>22.53</td><td>2-222</td><td>37.69</td><td>44.75</td><td>2-236</td><td>82.14</td><td>89.20</td><td>2-250</td><td>126.59</td><td>133.65</td><td>2-264</td><td>190.09</td><td>197.15</td><td>2-278</td><td>304.39</td><td>311.45</td></tr> <tr><td>2-209</td><td>17.04</td><td>24.10</td><td>2-223</td><td>40.87</td><td>47.93</td><td>2-237</td><td>85.32</td><td>92.38</td><td>2-251</td><td>129.77</td><td>136.83</td><td>2-265</td><td>196.44</td><td>203.50</td><td>2-279</td><td>329.79</td><td>336.85</td></tr> <tr><td>2-210</td><td>18.64</td><td>25.70</td><td>2-224</td><td>44.04</td><td>51.10</td><td>2-238</td><td>88.49</td><td>95.55</td><td>2-252</td><td>132.94</td><td>140.00</td><td>2-266</td><td>202.79</td><td>209.85</td><td>2-280</td><td>355.19</td><td>362.25</td></tr> <tr><td>2-211</td><td>20.22</td><td>27.28</td><td>2-225</td><td>47.22</td><td>54.28</td><td>2-239</td><td>91.67</td><td>98.73</td><td>2-253</td><td>136.12</td><td>143.18</td><td>2-267</td><td>209.14</td><td>216.20</td><td>2-281</td><td>380.59</td><td>387.65</td></tr> <tr><td>2-212</td><td>21.82</td><td>28.88</td><td>2-226</td><td>50.39</td><td>57.45</td><td>2-240</td><td>94.84</td><td>101.90</td><td>2-254</td><td>139.29</td><td>146.35</td><td>2-268</td><td>215.49</td><td>222.55</td><td>2-282</td><td>405.26</td><td>412.32</td></tr> <tr><td>2-213</td><td>23.39</td><td>30.45</td><td>2-227</td><td>53.57</td><td>60.63</td><td>2-241</td><td>98.02</td><td>105.08</td><td>2-255</td><td>142.47</td><td>149.53</td><td>2-269</td><td>221.84</td><td>228.90</td><td>2-283</td><td>430.66</td><td>437.72</td></tr> <tr><td>2-214</td><td>24.99</td><td>32.05</td><td>2-228</td><td>56.74</td><td>63.80</td><td>2-242</td><td>101.19</td><td>108.25</td><td>2-256</td><td>145.64</td><td>152.70</td><td>2-270</td><td>228.19</td><td>235.25</td><td>2-284</td><td>456.06</td><td>463.12</td></tr> </tbody> </table>																Parker N°	DI mm	DE mm	Parker N°	DI mm	DE mm	Parker N°	DI mm	DE mm	Parker N°	DI mm	DE mm	Parker N°	DI mm	DE mm	Parker N°	DI mm	DE mm	2-201	4.34	11.40	2-215	26.57	33.63	2-229	59.92	66.98	2-243	104.37	111.43	2-257	148.82	155.88	2-271	234.54	241.60	2-202	5.94	13.00	2-216	28.17	35.23	2-230	63.09	70.15	2-244	107.54	114.60	2-258	151.99	159.05	2-272	240.89	247.95	2-203	7.52	14.58	2-217	29.74	36.80	2-231	66.27	73.33	2-245	110.72	117.78	2-259	158.34	165.40	2-273	247.24	254.30	2-204	9.12	16.18	2-218	31.34	38.40	2-232	69.44	76.50	2-246	113.89	120.95	2-260	164.69	171.75	2-274	253.59	260.65	2-205	10.69	17.75	2-219	32.92	39.98	2-233	72.62	79.68	2-247	117.07	124.13	2-261	171.04	178.10	2-275	266.29	273.35	2-206	12.29	19.35	2-220	34.52	41.58	2-234	75.79	82.85	2-248	120.24	127.30	2-262	177.39	184.45	2-276	278.99	286.05	2-207	13.87	20.93	2-221	36.09	43.15	2-235	78.97	86.03	2-249	123.42	130.48	2-263	183.74	190.80	2-277	291.69	298.75	2-208	15.47	22.53	2-222	37.69	44.75	2-236	82.14	89.20	2-250	126.59	133.65	2-264	190.09	197.15	2-278	304.39	311.45	2-209	17.04	24.10	2-223	40.87	47.93	2-237	85.32	92.38	2-251	129.77	136.83	2-265	196.44	203.50	2-279	329.79	336.85	2-210	18.64	25.70	2-224	44.04	51.10	2-238	88.49	95.55	2-252	132.94	140.00	2-266	202.79	209.85	2-280	355.19	362.25	2-211	20.22	27.28	2-225	47.22	54.28	2-239	91.67	98.73	2-253	136.12	143.18	2-267	209.14	216.20	2-281	380.59	387.65	2-212	21.82	28.88	2-226	50.39	57.45	2-240	94.84	101.90	2-254	139.29	146.35	2-268	215.49	222.55	2-282	405.26	412.32	2-213	23.39	30.45	2-227	53.57	60.63	2-241	98.02	105.08	2-255	142.47	149.53	2-269	221.84	228.90	2-283	430.66	437.72	2-214	24.99	32.05	2-228	56.74	63.80	2-242	101.19	108.25	2-256	145.64	152.70	2-270	228.19	235.25	2-284	456.06	463.12																		
Parker N°	DI mm	DE mm	Parker N°	DI mm	DE mm	Parker N°	DI mm	DE mm	Parker N°	DI mm	DE mm	Parker N°	DI mm	DE mm	Parker N°	DI mm	DE mm																																																																																																																																																																																																																																																																																																	
2-201	4.34	11.40	2-215	26.57	33.63	2-229	59.92	66.98	2-243	104.37	111.43	2-257	148.82	155.88	2-271	234.54	241.60																																																																																																																																																																																																																																																																																																	
2-202	5.94	13.00	2-216	28.17	35.23	2-230	63.09	70.15	2-244	107.54	114.60	2-258	151.99	159.05	2-272	240.89	247.95																																																																																																																																																																																																																																																																																																	
2-203	7.52	14.58	2-217	29.74	36.80	2-231	66.27	73.33	2-245	110.72	117.78	2-259	158.34	165.40	2-273	247.24	254.30																																																																																																																																																																																																																																																																																																	
2-204	9.12	16.18	2-218	31.34	38.40	2-232	69.44	76.50	2-246	113.89	120.95	2-260	164.69	171.75	2-274	253.59	260.65																																																																																																																																																																																																																																																																																																	
2-205	10.69	17.75	2-219	32.92	39.98	2-233	72.62	79.68	2-247	117.07	124.13	2-261	171.04	178.10	2-275	266.29	273.35																																																																																																																																																																																																																																																																																																	
2-206	12.29	19.35	2-220	34.52	41.58	2-234	75.79	82.85	2-248	120.24	127.30	2-262	177.39	184.45	2-276	278.99	286.05																																																																																																																																																																																																																																																																																																	
2-207	13.87	20.93	2-221	36.09	43.15	2-235	78.97	86.03	2-249	123.42	130.48	2-263	183.74	190.80	2-277	291.69	298.75																																																																																																																																																																																																																																																																																																	
2-208	15.47	22.53	2-222	37.69	44.75	2-236	82.14	89.20	2-250	126.59	133.65	2-264	190.09	197.15	2-278	304.39	311.45																																																																																																																																																																																																																																																																																																	
2-209	17.04	24.10	2-223	40.87	47.93	2-237	85.32	92.38	2-251	129.77	136.83	2-265	196.44	203.50	2-279	329.79	336.85																																																																																																																																																																																																																																																																																																	
2-210	18.64	25.70	2-224	44.04	51.10	2-238	88.49	95.55	2-252	132.94	140.00	2-266	202.79	209.85	2-280	355.19	362.25																																																																																																																																																																																																																																																																																																	
2-211	20.22	27.28	2-225	47.22	54.28	2-239	91.67	98.73	2-253	136.12	143.18	2-267	209.14	216.20	2-281	380.59	387.65																																																																																																																																																																																																																																																																																																	
2-212	21.82	28.88	2-226	50.39	57.45	2-240	94.84	101.90	2-254	139.29	146.35	2-268	215.49	222.55	2-282	405.26	412.32																																																																																																																																																																																																																																																																																																	
2-213	23.39	30.45	2-227	53.57	60.63	2-241	98.02	105.08	2-255	142.47	149.53	2-269	221.84	228.90	2-283	430.66	437.72																																																																																																																																																																																																																																																																																																	
2-214	24.99	32.05	2-228	56.74	63.80	2-242	101.19	108.25	2-256	145.64	152.70	2-270	228.19	235.25	2-284	456.06	463.12																																																																																																																																																																																																																																																																																																	
 5.33 ± 0.13			<table border="1"> <thead> <tr> <th>Parker N°</th><th>DI mm</th><th>DE mm</th><th>Parker N°</th><th>DI mm</th><th>DE mm</th><th>Parker N°</th><th>DI mm</th><th>DE mm</th><th>Parker N°</th><th>DI mm</th><th>DE mm</th><th>Parker N°</th><th>DI mm</th><th>DE mm</th><th>Parker N°</th><th>DI mm</th><th>DE mm</th></tr> </thead> <tbody> <tr><td>2-309</td><td>10.46</td><td>21.12</td><td>2-324</td><td>34.29</td><td>44.95</td><td>2-339</td><td>81.92</td><td>92.58</td><td>2-354</td><td>129.54</td><td>140.20</td><td>2-369</td><td>202.57</td><td>213.23</td><td>2-384</td><td>380.37</td><td>391.03</td></tr> <tr><td>2-310</td><td>12.07</td><td>22.73</td><td>2-325</td><td>37.47</td><td>48.13</td><td>2-340</td><td>85.09</td><td>95.75</td><td>2-355</td><td>132.72</td><td>143.38</td><td>2-370</td><td>208.92</td><td>219.58</td><td>2-385</td><td>405.26</td><td>415.92</td></tr> <tr><td>2-311</td><td>13.64</td><td>24.30</td><td>2-326</td><td>40.64</td><td>51.30</td><td>2-341</td><td>88.27</td><td>98.93</td><td>2-356</td><td>135.89</td><td>146.55</td><td>2-371</td><td>215.27</td><td>225.93</td><td>2-386</td><td>430.66</td><td>441.32</td></tr> <tr><td>2-312</td><td>15.24</td><td>25.90</td><td>2-327</td><td>43.82</td><td>54.48</td><td>2-342</td><td>91.44</td><td>102.10</td><td>2-357</td><td>139.07</td><td>149.73</td><td>2-372</td><td>221.62</td><td>232.28</td><td>2-387</td><td>456.06</td><td>466.72</td></tr> <tr><td>2-313</td><td>16.81</td><td>27.47</td><td>2-328</td><td>46.99</td><td>57.65</td><td>2-343</td><td>94.62</td><td>105.28</td><td>2-358</td><td>142.24</td><td>152.90</td><td>2-373</td><td>227.97</td><td>238.63</td><td>2-388</td><td>481.41</td><td>492.07</td></tr> <tr><td>2-314</td><td>18.42</td><td>29.08</td><td>2-329</td><td>50.17</td><td>60.83</td><td>2-344</td><td>97.79</td><td>108.45</td><td>2-359</td><td>145.42</td><td>156.08</td><td>2-374</td><td>234.32</td><td>244.98</td><td>2-389</td><td>506.81</td><td>517.47</td></tr> <tr><td>2-315</td><td>19.99</td><td>30.65</td><td>2-330</td><td>53.34</td><td>64.00</td><td>2-345</td><td>100.97</td><td>111.63</td><td>2-360</td><td>148.59</td><td>159.25</td><td>2-375</td><td>240.67</td><td>251.33</td><td>2-390</td><td>532.21</td><td>542.87</td></tr> <tr><td>2-316</td><td>21.59</td><td>32.25</td><td>2-331</td><td>56.52</td><td>67.18</td><td>2-346</td><td>104.14</td><td>114.80</td><td>2-361</td><td>151.77</td><td>162.43</td><td>2-376</td><td>247.02</td><td>257.68</td><td>2-391</td><td>557.61</td><td>568.27</td></tr> <tr><td>2-317</td><td>23.16</td><td>33.82</td><td>2-332</td><td>59.69</td><td>70.35</td><td>2-347</td><td>107.32</td><td>117.98</td><td>2-362</td><td>158.12</td><td>168.78</td><td>2-377</td><td>253.37</td><td>264.03</td><td>2-392</td><td>582.68</td><td>593.34</td></tr> <tr><td>2-318</td><td>24.77</td><td>35.43</td><td>2-333</td><td>62.87</td><td>73.53</td><td>2-348</td><td>110.49</td><td>121.15</td><td>2-363</td><td>164.47</td><td>175.13</td><td>2-378</td><td>266.07</td><td>276.73</td><td>2-393</td><td>608.08</td><td>618.74</td></tr> <tr><td>2-319</td><td>26.34</td><td>37.00</td><td>2-334</td><td>66.04</td><td>76.70</td><td>2-349</td><td>113.67</td><td>124.33</td><td>2-364</td><td>170.82</td><td>181.48</td><td>2-379</td><td>278.77</td><td>289.43</td><td>2-394</td><td>633.48</td><td>644.14</td></tr> <tr><td>2-320</td><td>27.94</td><td>38.60</td><td>2-335</td><td>69.22</td><td>79.88</td><td>2-350</td><td>116.84</td><td>127.50</td><td>2-365</td><td>177.17</td><td>187.83</td><td>2-380</td><td>291.47</td><td>302.13</td><td>2-395</td><td>658.88</td><td>669.54</td></tr> <tr><td>2-321</td><td>29.51</td><td>40.17</td><td>2-336</td><td>72.39</td><td>83.05</td><td>2-351</td><td>120.02</td><td>130.68</td><td>2-366</td><td>183.52</td><td>194.18</td><td>2-381</td><td>304.17</td><td>314.83</td><td></td><td></td><td></td></tr> <tr><td>2-322</td><td>31.12</td><td>41.78</td><td>2-337</td><td>75.57</td><td>86.23</td><td>2-352</td><td>123.19</td><td>133.85</td><td>2-367</td><td>189.87</td><td>200.53</td><td>2-382</td><td>329.57</td><td>340.23</td><td></td><td></td><td></td></tr> <tr><td>2-323</td><td>32.69</td><td>43.35</td><td>2-338</td><td>78.74</td><td>89.40</td><td>2-353</td><td>126.37</td><td>137.03</td><td>2-368</td><td>196.22</td><td>206.88</td><td>2-383</td><td>354.97</td><td>365.63</td><td></td><td></td><td></td></tr> </tbody> </table>																Parker N°	DI mm	DE mm	Parker N°	DI mm	DE mm	Parker N°	DI mm	DE mm	Parker N°	DI mm	DE mm	Parker N°	DI mm	DE mm	Parker N°	DI mm	DE mm	2-309	10.46	21.12	2-324	34.29	44.95	2-339	81.92	92.58	2-354	129.54	140.20	2-369	202.57	213.23	2-384	380.37	391.03	2-310	12.07	22.73	2-325	37.47	48.13	2-340	85.09	95.75	2-355	132.72	143.38	2-370	208.92	219.58	2-385	405.26	415.92	2-311	13.64	24.30	2-326	40.64	51.30	2-341	88.27	98.93	2-356	135.89	146.55	2-371	215.27	225.93	2-386	430.66	441.32	2-312	15.24	25.90	2-327	43.82	54.48	2-342	91.44	102.10	2-357	139.07	149.73	2-372	221.62	232.28	2-387	456.06	466.72	2-313	16.81	27.47	2-328	46.99	57.65	2-343	94.62	105.28	2-358	142.24	152.90	2-373	227.97	238.63	2-388	481.41	492.07	2-314	18.42	29.08	2-329	50.17	60.83	2-344	97.79	108.45	2-359	145.42	156.08	2-374	234.32	244.98	2-389	506.81	517.47	2-315	19.99	30.65	2-330	53.34	64.00	2-345	100.97	111.63	2-360	148.59	159.25	2-375	240.67	251.33	2-390	532.21	542.87	2-316	21.59	32.25	2-331	56.52	67.18	2-346	104.14	114.80	2-361	151.77	162.43	2-376	247.02	257.68	2-391	557.61	568.27	2-317	23.16	33.82	2-332	59.69	70.35	2-347	107.32	117.98	2-362	158.12	168.78	2-377	253.37	264.03	2-392	582.68	593.34	2-318	24.77	35.43	2-333	62.87	73.53	2-348	110.49	121.15	2-363	164.47	175.13	2-378	266.07	276.73	2-393	608.08	618.74	2-319	26.34	37.00	2-334	66.04	76.70	2-349	113.67	124.33	2-364	170.82	181.48	2-379	278.77	289.43	2-394	633.48	644.14	2-320	27.94	38.60	2-335	69.22	79.88	2-350	116.84	127.50	2-365	177.17	187.83	2-380	291.47	302.13	2-395	658.88	669.54	2-321	29.51	40.17	2-336	72.39	83.05	2-351	120.02	130.68	2-366	183.52	194.18	2-381	304.17	314.83				2-322	31.12	41.78	2-337	75.57	86.23	2-352	123.19	133.85	2-367	189.87	200.53	2-382	329.57	340.23				2-323	32.69	43.35	2-338	78.74	89.40	2-353	126.37	137.03	2-368	196.22	206.88	2-383	354.97	365.63			
Parker N°	DI mm	DE mm	Parker N°	DI mm	DE mm	Parker N°	DI mm	DE mm	Parker N°	DI mm	DE mm	Parker N°	DI mm	DE mm	Parker N°	DI mm	DE mm																																																																																																																																																																																																																																																																																																	
2-309	10.46	21.12	2-324	34.29	44.95	2-339	81.92	92.58	2-354	129.54	140.20	2-369	202.57	213.23	2-384	380.37	391.03																																																																																																																																																																																																																																																																																																	
2-310	12.07	22.73	2-325	37.47	48.13	2-340	85.09	95.75	2-355	132.72	143.38	2-370	208.92	219.58	2-385	405.26	415.92																																																																																																																																																																																																																																																																																																	
2-311	13.64	24.30	2-326	40.64	51.30	2-341	88.27	98.93	2-356	135.89	146.55	2-371	215.27	225.93	2-386	430.66	441.32																																																																																																																																																																																																																																																																																																	
2-312	15.24	25.90	2-327	43.82	54.48	2-342	91.44	102.10	2-357	139.07	149.73	2-372	221.62	232.28	2-387	456.06	466.72																																																																																																																																																																																																																																																																																																	
2-313	16.81	27.47	2-328	46.99	57.65	2-343	94.62	105.28	2-358	142.24	152.90	2-373	227.97	238.63	2-388	481.41	492.07																																																																																																																																																																																																																																																																																																	
2-314	18.42	29.08	2-329	50.17	60.83	2-344	97.79	108.45	2-359	145.42	156.08	2-374	234.32	244.98	2-389	506.81	517.47																																																																																																																																																																																																																																																																																																	
2-315	19.99	30.65	2-330	53.34	64.00	2-345	100.97	111.63	2-360	148.59	159.25	2-375	240.67	251.33	2-390	532.21	542.87																																																																																																																																																																																																																																																																																																	
2-316	21.59	32.25	2-331	56.52	67.18	2-346	104.14	114.80	2-361	151.77	162.43	2-376	247.02	257.68	2-391	557.61	568.27																																																																																																																																																																																																																																																																																																	
2-317	23.16	33.82	2-332	59.69	70.35	2-347	107.32	117.98	2-362	158.12	168.78	2-377	253.37	264.03	2-392	582.68	593.34																																																																																																																																																																																																																																																																																																	
2-318	24.77	35.43	2-333	62.87	73.53	2-348	110.49	121.15	2-363	164.47	175.13	2-378	266.07	276.73	2-393	608.08	618.74																																																																																																																																																																																																																																																																																																	
2-319	26.34	37.00	2-334	66.04	76.70	2-349	113.67	124.33	2-364	170.82	181.48	2-379	278.77	289.43	2-394	633.48	644.14																																																																																																																																																																																																																																																																																																	
2-320	27.94	38.60	2-335	69.22	79.88	2-350	116.84	127.50	2-365	177.17	187.83	2-380	291.47	302.13	2-395	658.88	669.54																																																																																																																																																																																																																																																																																																	
2-321	29.51	40.17	2-336	72.39	83.05	2-351	120.02	130.68	2-366	183.52	194.18	2-381	304.17	314.83																																																																																																																																																																																																																																																																																																				
2-322	31.12	41.78	2-337	75.57	86.23	2-352	123.19	133.85	2-367	189.87	200.53	2-382	329.57	340.23																																																																																																																																																																																																																																																																																																				
2-323	32.69	43.35	2-338	78.74	89.40	2-353	126.37	137.03	2-368	196.22	206.88	2-383	354.97	365.63																																																																																																																																																																																																																																																																																																				
 6.99 ± 0.15			<table border="1"> <thead> <tr> <th>Parker N°</th><th>DI mm</th><th>DE mm</th><th>Parker N°</th><th>DI mm</th><th>DE mm</th><th>Parker N°</th><th>DI mm</th><th>DE mm</th><th>Parker N°</th><th>DI mm</th><th>DE mm</th><th>Parker N°</th><th>DI mm</th><th>DE mm</th><th>Parker N°</th><th>DI mm</th><th>DE mm</th></tr> </thead> <tbody> <tr><td>2-425</td><td>113.67</td><td>127.65</td><td>2-434</td><td>142.24</td><td>156.22</td><td>2-443</td><td>189.87</td><td>203.85</td><td>2-452</td><td>291.47</td><td>305.45</td><td>2-461</td><td>405.26</td><td>419.24</td><td>2-470</td><td>532.26</td><td>546.24</td></tr> <tr><td>2-426</td><td>116.84</td><td>130.82</td><td>2-435</td><td>145.42</td><td>159.40</td><td>2-444</td><td>196.22</td><td>210.20</td><td>2-453</td><td>304.17</td><td>318.15</td><td>2-462</td><td>417.96</td><td>431.94</td><td>2-471</td><td>557.66</td><td>571.64</td></tr> <tr><td>2-427</td><td>120.02</td><td>134.00</td><td>2-436</td><td>148.59</td><td>162.57</td><td>2-445</td><td>202.57</td><td>216.55</td><td>2-454</td><td>316.87</td><td>330.85</td><td>2-463</td><td>430.66</td><td>444.64</td><td>2-472</td><td>582.68</td><td>596.66</td></tr> <tr><td>2-428</td><td>123.19</td><td>137.17</td><td>2-437</td><td>151.77</td><td>165.75</td><td>2-446</td><td>215.27</td><td>229.25</td><td>2-455</td><td>329.57</td><td>343.55</td><td>2-464</td><td>443.36</td><td>457.34</td><td>2-473</td><td>608.08</td><td>622.06</td></tr> <tr><td>2-429</td><td>126.37</td><td>140.35</td><td>2-438</td><td>158.12</td><td>172.10</td><td>2-447</td><td>227.97</td><td>241.95</td><td>2-456</td><td>342.27</td><td>356.25</td><td>2-465</td><td>456.06</td><td>470.04</td><td>2-474</td><td>633.48</td><td>647.46</td></tr> <tr><td>2-430</td><td>129.54</td><td>143.52</td><td>2-439</td><td>164.47</td><td>178.45</td><td>2-448</td><td>240.67</td><td>254.65</td><td>2-457</td><td>354.97</td><td>368.95</td><td>2-466</td><td>468.76</td><td>482.74</td><td>2-475</td><td>658.88</td><td>672.86</td></tr> <tr><td>2-431</td><td>132.72</td><td>146.70</td><td>2-440</td><td>170.82</td><td>184.80</td><td>2-449</td><td>253.37</td><td>267.35</td><td>2-458</td><td>367.67</td><td>381.65</td><td>2-467</td><td>481.46</td><td>495.44</td><td></td><td></td><td></td></tr> <tr><td>2-432</td><td>135.89</td><td>149.87</td><td>2-441</td><td>177.17</td><td>191.15</td><td>2-450</td><</tr></tbody></table>																Parker N°	DI mm	DE mm	Parker N°	DI mm	DE mm	Parker N°	DI mm	DE mm	Parker N°	DI mm	DE mm	Parker N°	DI mm	DE mm	Parker N°	DI mm	DE mm	2-425	113.67	127.65	2-434	142.24	156.22	2-443	189.87	203.85	2-452	291.47	305.45	2-461	405.26	419.24	2-470	532.26	546.24	2-426	116.84	130.82	2-435	145.42	159.40	2-444	196.22	210.20	2-453	304.17	318.15	2-462	417.96	431.94	2-471	557.66	571.64	2-427	120.02	134.00	2-436	148.59	162.57	2-445	202.57	216.55	2-454	316.87	330.85	2-463	430.66	444.64	2-472	582.68	596.66	2-428	123.19	137.17	2-437	151.77	165.75	2-446	215.27	229.25	2-455	329.57	343.55	2-464	443.36	457.34	2-473	608.08	622.06	2-429	126.37	140.35	2-438	158.12	172.10	2-447	227.97	241.95	2-456	342.27	356.25	2-465	456.06	470.04	2-474	633.48	647.46	2-430	129.54	143.52	2-439	164.47	178.45	2-448	240.67	254.65	2-457	354.97	368.95	2-466	468.76	482.74	2-475	658.88	672.86	2-431	132.72	146.70	2-440	170.82	184.80	2-449	253.37	267.35	2-458	367.67	381.65	2-467	481.46	495.44				2-432	135.89	149.87	2-441	177.17	191.15	2-450																																																																																																																																									
Parker N°	DI mm	DE mm	Parker N°	DI mm	DE mm	Parker N°	DI mm	DE mm	Parker N°	DI mm	DE mm	Parker N°	DI mm	DE mm	Parker N°	DI mm	DE mm																																																																																																																																																																																																																																																																																																	
2-425	113.67	127.65	2-434	142.24	156.22	2-443	189.87	203.85	2-452	291.47	305.45	2-461	405.26	419.24	2-470	532.26	546.24																																																																																																																																																																																																																																																																																																	
2-426	116.84	130.82	2-435	145.42	159.40	2-444	196.22	210.20	2-453	304.17	318.15	2-462	417.96	431.94	2-471	557.66	571.64																																																																																																																																																																																																																																																																																																	
2-427	120.02	134.00	2-436	148.59	162.57	2-445	202.57	216.55	2-454	316.87	330.85	2-463	430.66	444.64	2-472	582.68	596.66																																																																																																																																																																																																																																																																																																	
2-428	123.19	137.17	2-437	151.77	165.75	2-446	215.27	229.25	2-455	329.57	343.55	2-464	443.36	457.34	2-473	608.08	622.06																																																																																																																																																																																																																																																																																																	
2-429	126.37	140.35	2-438	158.12	172.10	2-447	227.97	241.95	2-456	342.27	356.25	2-465	456.06	470.04	2-474	633.48	647.46																																																																																																																																																																																																																																																																																																	
2-430	129.54	143.52	2-439	164.47	178.45	2-448	240.67	254.65	2-457	354.97	368.95	2-466	468.76	482.74	2-475	658.88	672.86																																																																																																																																																																																																																																																																																																	
2-431	132.72	146.70	2-440	170.82	184.80	2-449	253.37	267.35	2-458	367.67	381.65	2-467	481.46	495.44																																																																																																																																																																																																																																																																																																				
2-432	135.89	149.87	2-441	177.17	191.15	2-450																																																																																																																																																																																																																																																																																																												

Serie especial 3-XXX

Parker Nº	D.I. mm	W mm
3-901	4.70 ± 0.13	1.42 ± 0.08
3-902	6.07 ± 0.13	1.63 ± 0.08
3-903	7.65 ± 0.13	1.63 ± 0.08
3-904	8.92 ± 0.13	1.83 ± 0.08
3-905	10.52 ± 0.13	1.83 ± 0.08
3-906	11.89 ± 0.13	1.98 ± 0.08
3-907	13.46 ± 0.18	2.08 ± 0.08
3-908	16.36 ± 0.23	2.21 ± 0.08
3-909	17.93 ± 0.23	2.46 ± 0.08
3-910	19.18 ± 0.23	2.46 ± 0.08



Parker Nº	D.I. mm	W mm
3-911	21.92 ± 0.23	2.95 ± 0.10
3-912	23.47 ± 0.23	2.95 ± 0.10
3-913	25.04 ± 0.25	2.95 ± 0.10
3-914	26.59 ± 0.25	2.95 ± 0.10
3-916	29.74 ± 0.25	2.95 ± 0.10
3-918	34.42 ± 0.30	2.95 ± 0.10
3-920	37.47 ± 0.36	3.00 ± 0.10
3-924	43.69 ± 0.36	3.00 ± 0.10
3-928	53.09 ± 0.46	3.00 ± 0.10
3-932	59.36 ± 0.46	3.00 ± 0.10

Tolerancia de la serie 2-XXX

Código Parker		Tolerancia D. Interior ± mm.	Código Parker		Tolerancia D. Interior ± mm.	Código Parker		Tolerancia D. Interior ± mm.	Código Parker		Tolerancia D. Interior ± mm.	Código Parker		Tolerancia D. Interior ± mm.
Desde	Hasta		Desde	Hasta		Desde	Hasta		Desde	Hasta		Desde	Hasta	
2-001	2-003	0.10	2-129	2-134	0.38	2-227	2-230	0.51	2-329	2-332	0.46	2-393		2.79
2-004	2-014	0.13	2-135	2-140	0.43	2-231	2-238	0.61	2-333	2-336	0.51	2-394		2.92
2-015	2-021	0.18	2-141	2-146	0.51	2-239	2-243	0.71	2-337	2-341	0.61	2-395		3.05
2-016	2-024	0.23	2-147	2-150	0.56	2-244	2-248	0.76	2-342	2-346	0.71	2-425	2-428	0.84
2-022	2-027	0.25	2-151	2-153	0.61	2-249	2-258	0.89	2-347	2-352	0.76	2-429	2-437	0.94
2-025	2-030	0.28	2-154	2-155	0.71	2-259	2-262	1.02	2-353	2-361	0.94	2-438	2-441	1.02
2-028	2-032	0.33	2-156	2-158	0.76	2-263	2-266	1.14	2-362	2-365	1.02	2-442	2-445	1.14
2-031	2-037	0.38	2-159	2-163	0.89	2-267	2-270	1.27	2-366	2-369	1.14	2-446	2-449	1.40
2-033	2-040	0.46	2-164	2-167	1.02	2-271	2-275	1.40	2-370	2-373	1.27	2-450	2-455	1.52
2-038	2-043	0.51	2-168	2-171	1.14	2-276	2-281	1.65	2-374	2-377	1.40	2-456	2-460	1.78
2-041	2-045	0.61	2-172	2-174	1.27	2-282		1.91	2-378	2-379	1.52	2-461	2-462	1.91
2-044	2-048	0.69	2-175	2-178	1.40	2-283		2.03	2-380	2-382	1.65	2-463		2.03
2-046	2-050	0.76	2-201	2-206	0.13	2-284		2.16	2-383	2-384	1.78	2-464	2-466	2.16
2-049	2-112	0.94	2-207		0.18	2-309	2-310	0.13	2-385		1.91	2-467	2-468	2.29
2-102	2-116	0.13	2-208	2-209	0.23	2-311		0.18	2-386		2.03	2-469	2-470	2.41
2-113		0.18	2-210	2-215	0.25	2-312	2-313	0.23	2-387		2.16	2-471		2.54
2-114	2-116	0.23	2-216	2-221	0.30	2-314	2-319	0.25	2-388		2.29	2-472		2.67
2-117	2-122	0.25	2-222	2-223	0.38	2-320	2-324	0.30	2-389	2-390	2.41	2-473		2.79
2-123	2-128	0.30	2-224	2-226	0.46	2-325	2-328	0.38	2-391		2.54	2-474		2.92
									2-392		2.67	2-475		3.05

Tolerancias válidas únicamente para compuesto N3000-70A

Compuestos, características y aplicaciones

Designación ASTM D2000-80 SAE J200	Compuesto Parker	Temperatura Admisible	Polímero Base	Dureza Shore A	Aplicación
M3CH 714 A25 B34 EO16 EO 36 (Color negro)	N3000-70A	-30°F a + 250 °F -34°C a + 121 °C	Nitrilo ó Buna "N"	70 ± 5	Aceites minerales, hidráulicos derivados del petróleo Agua - Aire - Freón 12 - Uso estático y dinámico
M3CH 910 B34 EO16 EO 36 (Color negro)	N3006-90A	-40°F a + 250 °F -40°C a + 121°C	Nitrilo ó Buna "N"	90 ± 5	Idem anterior para uso estático a altas presiones
M3BC 710 A14 B14 EO14 EO34 (Color negro)	C3002-70A	-45°F a + 300°F -43°C a + 149°C	Cloropreno	70 ± 5	Uso estático a la intemperie Amoníaco, Freón 12, Freón 22, Oxígeno
M7GE 705 A19 B37 EO16 EO36 F19 G11 EA14 (Color terracota)	S3018-70A	-65°F a + 450°F -54°C a + 232°C	Silicona	70 ± 5	Uso estático para alta temperatura
M2 HK 710 A1-10 B37 B38 EF31 EO78 F15 Z1 Z2 (Color marrón)	V3252-75A	-15° F a + 400°F -26°C a + 204°C	Fluoro Elastómero	75 75 ± 5	Acidos inorgánicos. Compuestos aromáticos. Derivados del Benceno, Tolueno etc, Oxígeno Compuestos clorados (Tetracloruro de Carbono. Tricloroetileno. etc). Uso estático y dinámico.
M2 AA 810 A13 F17 EA 14 Z1 (Color negro)	E3014-80A	-70°F a + 300°F -57°C a + 149°C	Etileno Propileno	80 ± 5	Flúidos para frenos de automotores. Vapor de agua Flúidos Hidraulicos base ésteres fosfatados. Acetona. Ozono. Uso estático y dinámico.

O-Ring

Construya con el mejor !

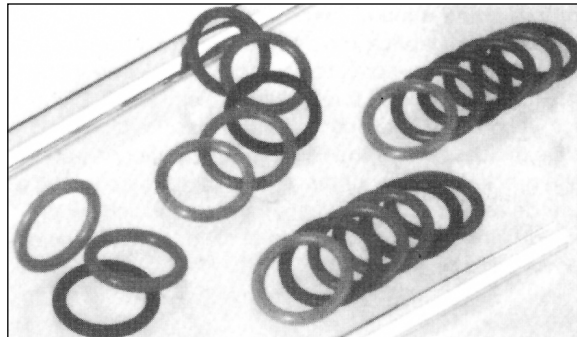
O-Rings milimétricos y especiales

Además de la serie standard 2-XXX y 3-XXX , Parker dispone de herramienta para la fabricación de más de 600 medidas milimétricas y especiales no contenidas en este catálogo.

Esta gran variedad de O-Rings se ve incrementada por la posibilidad de abastecimiento que otorgan las distintas plantas de Parker, en el mundo.

Por tratarse de medidas especiales, solo se proveen bajo pedido.

Favor de contactarse con nuestros distribuidores.

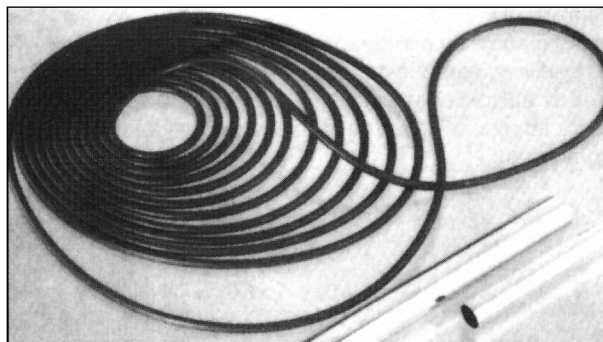


Serie "XL"- O-Rings de gran diámetro

Para evitar los inconvenientes de sellado que se presentan con el uso de O-Rings de gran diámetro obtenidos a partir de un perfil extrudado, Parker desarrolló un sistema de fabricación el cual permite el moldeo de O-Rings de grandes dimensiones, sin línea de unión o pegado. Por este método, se moldean piezas de diámetro superior a 500 mm sin limitación de su diámetro interior.

En la actualidad se dispone de herramienta para la fabricación de O-Rings de gran diámetro de sección 3.53, 5.33, 6.00, 6.99, 7.25, 8.00, 9.52, 10.65, 12.00 y 22,00 mm. La cantidad a solicitar suele ser reducida y depende del diámetro interior del O-Ring.

Para solicitar estas piezas, deberá especificarse diámetro interior, sección, compuesto y cantidad requerida.



Parbak serie 8-XXX- Respaldos antiextrusión

Son utilizados para prevenir el daño por extrusión de los O-Rings sometidos a elevadas presiones.

Fabricados en compuesto N3232-90 A de alta resistencia a la extrusión, se montan en forma conjunta con el O-Ring.

Su instalación es del lado opuesto a la presión.

Para adoptarlo se requiere incrementar el ancho de ranura.

En caso de recibir la máxima presión de ambos lados, se deberán utilizar dos Parbak.

Sus principales ventajas son:

-No presentan falta de continuidad, o interrupción en su perímetro que posibilite el daño del O-Ring.

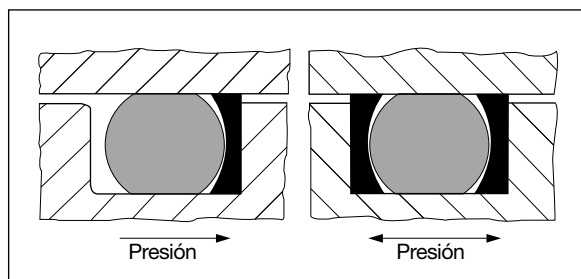
-Fácil instalación.

-Permiten trabajar a mayores presiones, o con huelgos superiores a los admitidos para un O-Ring sin respaldo.

-Son sensitivos, proporcionando un mayor control del huelgo a medida que se incrementa la presión.

-Su codificación se corresponde con los O-Rings de la serie 2-XXX.

Consultenos por su disponibilidad.



O'Ring Sección "W"	Ancho de ranura "G" ± 0.10		
	Sin Parbak	Con un Parbak	Con dos Parbak
1,78	2,50	3,60	4,70
2,62	3,70	4,80	5,90
3,53	4,90	5,90	6,90
5,33	7,30	8,80	10,30
6,99	9,70	12,10	14,50

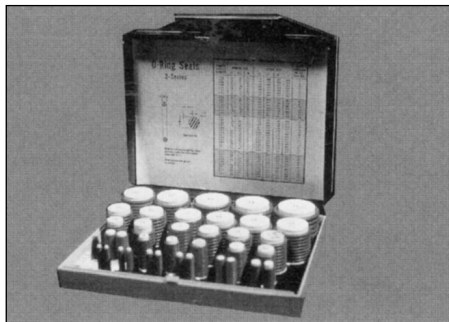
Kit de O-Ring:

Contiene 492 anillos de la serie 2-XXX, en 37 medidas distintas en compuesto standard N3000-70 A.

Reduce los tiempos de parada de máquina.

Permite disponer de un pequeño stock de fácil transporte.

Admite la reposición parcial de su contenido.

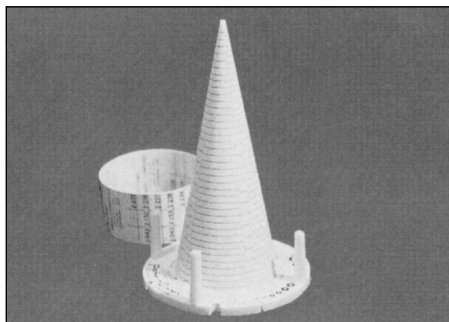


Cono y cinta de identificación:

Permite una rápida individualización de los O-Rings de la serie 2-XXX.

Mediante el cono es posible identificar los O-Rings de diámetro interior menor a 75 mm.

La cinta permite extender su alcance a O-Rings de hasta 200 mm.



Parker Super-O-Lube:

Lubricante para el montaje. Reduce el rozamiento e incrementa la vida útil del O-Ring.

Indispensable en aplicaciones de vacío.

Atóxica y compatible con todos los compuestos conocidos.

No bloquea los sistemas con filtros de hasta 30 μ m

Se suministra en envase de 29 grs.

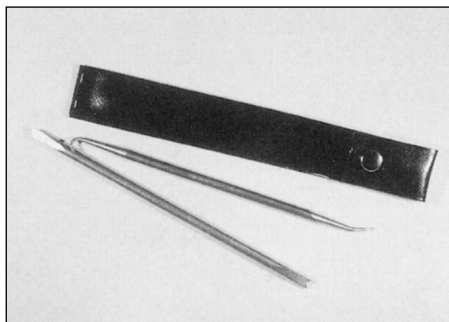


Herramientas de montaje:

Facilitan el montaje o la extracción de los O-Rings, de su alojamiento.

El conjunto consta de dos piezas y se presenta en un estuche plástico.

Puede ser entregado en forma conjunta con el Kit de O-Ring.



**Parker Hannifin
Argentina S.A.I.C.**

Stephenson 2711- (B1667AKC.) Tortuguitas
Malvinas Argentinas - Buenos Aires - Argentina
Tel.: (5411) 4752-4129 - (54) 03327-442956
/444256 - Fax: (5411) 4752-3704

www.parker.com.ar - E-mail: info@parker.com.ar

DISTRIBUIDOR: